

DO YOU KNOW...? KLINGER FLUID CONTROL ACTUATOR SOLUTIONS

KLINGER KFC offers a comprehensive actuator portfolio for automation of KLINGER valves.
Know How, stock availability for standard products and test technology with reliable KLINGER products are the basis.
The focus is on tailor made, efficient and economical solutions to create maximum customer benefit.

KLINGER KFC ball and piston valves can be combined with all common actuator brands

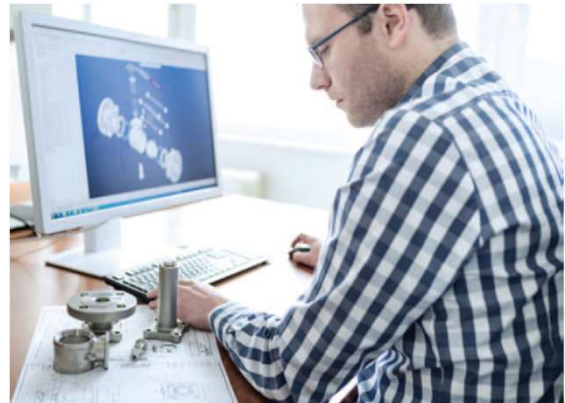
Stockholding

- >> Large range of standard actuators
- >> Rapid availability due to product availability in stock
- >> Accessories: Limit switches, solenoid valves etc...
- >> Different brackets and couplings



Sizing

- >> Efficient actuator sizing
- >> Consulting and quotations



Testing

- >> Function test
- >> Creation of test protocols
- >> Witness tests



Assembly

- >> Installation by qualified personnel
- >> Settings



KLINGER FLUID CONTROL ACTUATOR SOLUTIONS

Details automation:

Pneum. membrane actuators: (only combinable with KVN)

- >> Single acting
- >> Double acting
- >> 0 to 360°
- >> Emergency hand wheel available
- >> Different air supplies
- >> Solenoid valves standard/EX version
- >> Limit switch boxes standard/EX version
- >> Positioner for 4-20mA signal



Electric actuators:

- >> Part turn actuators with gear for KH(SV)I
- >> Part turn for KHA and multi for KVN
- >> Voltages 230/380/400V etc...
- >> 0 to 90° for ball valves KHA /KH(SV)I
- >> 0 to 360° for piston valve KVN
- >> Actuator controls for OPEN/CLOSE
- >> Actuator controls für bus system
- >> Ex version
- >> Regulation version available
- >> Emergency hand wheel as a standard



Pneumatic & hydraulic actuators:

- >> Single acting for KHA and KH(SV)I
- >> Double acting for KHA and KH(SV)I
- >> 0 to 90°
- >> Emergency hand wheel available
- >> Different air supplies
- >> Solenoid valves standard/EX version
- >> Limit switch boxes standard/EX version
- >> Positioner for 4-20mA signal



Combinable with:

KVN piston valve DN15 to 200



KH(SV)I ball valve series DN150 to 1000



KHA ball valve series DN15 to 125



KHA "trunnion mounted"



